

EQUINE APPRENTICESHIPS


Ofsted

Good
Provider

WELCOME TO THE COLLEGE OF ANIMAL WELFARE

The College of Animal Welfare was established in 1989 by one of the leading animal welfare charities, Wood Green Animal Shelters in Cambridgeshire. The vision was to use education to help tackle animal welfare issues and the problem of unwanted and abandoned animals.

In 1996, the College, known at the time as the Wood Green College of Animal Welfare, became an independently managed, not-for-profit, organisation in its own right and changed its name to The College of Animal Welfare. Today, the College has five main centres in Cambridgeshire, North London, Leeds, Wigan and Edinburgh, as well as satellite centres across the UK, and specialises in training in the land-based sector.

We strongly believe that education and training is the key to raising standards of animal welfare. To this end, we strive to create new and accessible opportunities for learning, and encourage employers and those working with animals to undertake appropriate levels of training and continue with lifelong learning and education.

WHY HORSE CARE?

✓ **Do a job you love every day!**

Imagine combining your hobby and passion into a career and spending each working day doing something you love; this could be your reality!

✓ **Varied career options**

Job prospects for those working in horse care are varied. As a horse care professional, you could work in a variety of different environments, such as a stables, riding school, private yard; perhaps looking to take on a supervisory or managerial role over time. What's more - many jobs in the horse care sector are flexible, with opportunities to work for yourself, work part-time or even abroad.

WHY AN APPRENTICESHIP?

- ✓ **Earn whilst you learn:** Gain a qualification whilst earning a salary.
- ✓ **Gain valuable work experience:** Build your CV with employment history.
- ✓ **No course fees to pay:** All apprenticeship fees are paid by the employer.
- ✓ **Paid time off to study:** You will be given at least six hours per week of off-the-job training for your learning activities.

Speak to a Client Advisor

If studying horse care is something you are thinking about but would like to talk through your options, please call us and speak to one of our Client Advisors. They are here to help and make sure that you choose the course that is right for you.

T: 01480 422060 E: admin@caw.ac.uk



MEET OUR STUDENTS

Equine apprenticeship student, Sophie Baudot, achieves the best results seen in her EPA

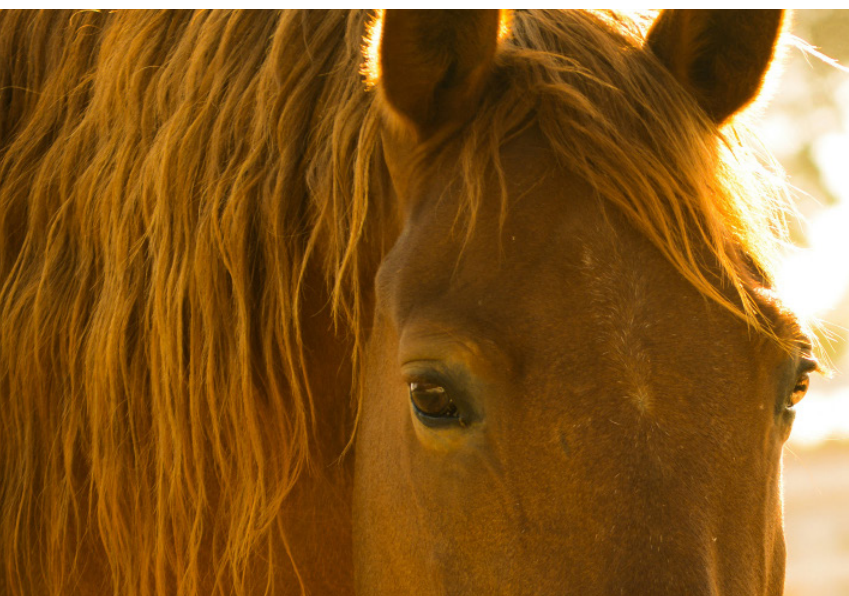
The College of Animal Welfare equine apprenticeship student, Sophie Baudot, gained a distinction in her End Point Assessment (EPA), and picked up the highest mark ever seen by the EPA organisation in the process.

Sophie, who has now completed her Level 3 Senior Equine Groom Apprenticeship reflected on her time studying with CAW: *"I have thoroughly enjoyed all aspects of this course – I've had a fantastic tutor and team throughout! I have learnt so much and had brilliant experience with my education."*

Her enthusiasm and commitment to learning have been evident in every step of her apprenticeship. Sophie's transformation throughout the programme has been remarkable. Her college tutor, Rebecca Whittingham, recalls, *"It's hard to remember that Sophie was very shy when she started her apprenticeship and had difficulty talking to others. What a transformation and incredible achievement! I am very proud of her, as are her family and colleagues."* She continued, *"Sophie continues to thrive at Baylands Equestrian Centre, where she is a highly valued member of the team, supervising, teaching and supporting others. Feedback from anyone who comes in contact with her is always positive, her professional conduct exceeds expectations in all areas. A well-deserved distinction for an exceptional apprentice, I wish her all the best of luck for the future".*

This remarkable achievement is not just a testament to her hard work, but also to the support of her employer, college tutor and peers.

Achieving a distinction in an end-point assessment is no small feat. It demands a thorough understanding of equine care and exceptional practical skills. Sophie's distinction is a clear indication of her proficiency and readiness for a successful career in the equine industry.



**Want to find out more?
It's simple...**

Visit our [website](#), or contact one of our Client Advisors. They are here to help and make sure that you choose the course that is right for you.

T: 01480 422060 E: admin@kaw.ac.uk

EQUINE GROOM (LEVEL 2 APPRENTICESHIP)

As an equine groom apprentice, you will be employed in a suitable environment working with horses whilst gaining vital knowledge, skills and experience.

KEY FACTS

DURATION

12-14 months. You will undertake at least six hours of off-the-job training per week.

ATTENDANCE

You will be allocated a Work-based Learning Assessor who will support you through your qualification via email, Teams calls, telephone contact and three visits to your place of work.

START DATE

Start at any time.

LOCATION

Available in England. Your place of work should be located within a 90 minute radius of our Huntingdon centre; if it is outside of this area, please contact us as we may still be able to meet your training needs.

CONTENT

CORE KNOWLEDGE, SKILLS AND BEHAVIOURS

You will gain the essential knowledge, skills and behaviours needed to ensure you maintain safe working practices and take responsibility for yourself, others and the animals in your care.

KNOWLEDGE AND SKILLS

You will gain a comprehensive understanding of wide range of knowledge areas, including:

- Safe working practices
- Yard and field routines and duties
- Horse anatomy, physiology and welfare
- Horse handling, care and appearance
- Saddlery and equipment
- Travelling horses
- Non-ridden exercise

BEHAVIOURS

You will look at safe working, work ethic, responsibility, team work and communication.

PATHWAYS

In addition to the core knowledge, skills and behaviours you will undertake further learning

relevant to your job role and interests. There are five specialised routes you can choose from as follows:

- **BREEDING** This includes study of the principles of equine reproduction, importance of teasing, monitoring of pregnancy, disease awareness and preparation of equines for sale.
- **DRIVING** You will understand all parts of a single set of harness, correct usage with two and four wheeled vehicles with independent shafts and exercise techniques in a non-driving environment.
- **RACING** You will select to follow either the Racing Exercise Groom or the Racing Yard Based Groom pathways and learn areas such as specific exercise regimes, regulatory requirements and fitting specialist racing equipment and tack.
- **RIDING** Specific skills and knowledge will cover areas such as the correct riding position, use of pole work, riding in a group and on the road and public places.
- **NON-RIDING** Knowledge and skills will be gained in areas such as stock rotation, supply storage, yard based records, customer care and the benefits and practice of lunging.



ASSESSMENT

FUNCTIONAL SKILLS

You will undertake Functional Skills Level 1 and Level 2 in English and Maths if you are under 19 years of age (unless exempt).

PORTFOLIO

During your apprenticeship you will compile a portfolio of evidence to demonstrate your knowledge, skills and behaviours.

Once you have completed your portfolio, Functional Skills and a minimum of 12 months of training, you will be able to undertake the End Point Assessment.

END POINT ASSESSMENT (EPA)

The EPA consists of:

Knowledge Test: An online or paper-based multiple choice question test taken at the workplace or approved centre (invigilated).

Practical Observation: An observation of the apprentice by an independent assessor.

Professional Discussion: A structured interview between the apprentice and the independent assessor taking place after the knowledge test and practical observation which will provide the opportunity to use portfolio evidence to illustrate professional competence

Your performance in the EPA will determine the apprenticeship grade of fail, pass or distinction.

ENTRY REQUIREMENTS

There are no formal academic entry requirements. However, you will need to be living and working in England in a suitable equine environment (such as a riding school, horse charity or racing yard), earning at least the National Minimum Wage for Apprentices, within a 90 minute radius of our Huntingdon centre. If your place of work is outside of this area, please contact us as we may still be able to meet your training needs.

To complete this apprenticeship within 12-18 months you will need to be working for a minimum of 30 hours per week, if you are working less than 30 hours a week the length of your apprenticeship will be extended depending on your working hours.

FEES

Apprenticeship fees are payable by the employer. Fees can be found on our [website](#).

WHAT NEXT?

On completion of your apprenticeship you will have gained the confidence, practical skills and abilities to excel in your position.

If you are looking to study to the next level you may look consider undertaking the [Level 3 Senior Equine Groom Apprenticeship](#). To do so you would need to be working in a supervisory or managerial position, however if you are not currently working in such a role but are aspiring to do so, it may still be possible to undertake the advanced apprenticeship; this will be assessed on an individual basis and is something your assessor will discuss with you as you approach the end of the level 2 apprenticeship.

Speak to a Client Advisor

If studying horse care is something you are thinking about but would like to talk through your options, please call us and speak to one of our Client Advisors. They are here to help and make sure that you choose the course that is right for you.

T: 01480 422060 E: admin@caw.ac.uk

Ready to apply? It's simple...

1. Visit our [website](#).
2. Find the course you wish to apply for.
3. Click on the 'Apply Now' button and follow the step-by-step instructions.
4. Once you have completed your application you will be contacted by a member of our admissions team with the next steps.



SENIOR EQUINE GROOM (LEVEL 3 APPRENTICESHIP)

This apprenticeship is ideal for those who are working in the equine industry in a supervisory position, looking to build on existing knowledge and skills to take their career to the next level.

During the apprenticeship you will solidify your abilities to plan and coordinate the care of horses, and lead teams to achieve tasks and objectives whilst maintaining a safe working environment.



KEY FACTS

DURATION

18-24 months. You will undertake at least six hours of off-the-job training per week.

ATTENDANCE

You will be allocated a Work-based Learning Assessor who will support you through your qualification via email, Teams calls, telephone contact and regular visits to your place of work.

START DATE

Start at any time.

LOCATION

Available in England. Your place of work should be located within a 90 minute radius of our Huntingdon centre; if it is outside of this area, please contact us as we may still be able to meet your training needs.

CONTENT

CORE KNOWLEDGE, SKILLS AND BEHAVIOURS

You will gain the essential knowledge, skills and behaviours needed to ensure you maintain safe working practices and take responsibility for yourself, others and the animals in your care.

KNOWLEDGE AND SKILLS

You will gain a comprehensive understanding of wide range of knowledge areas, including:

- Safe working practices
- Yard and field routines and duties
- Horse anatomy, physiology and welfare
- Horse Handling, care and appearance

- Nutrition & fitness
- Travelling horses
- Non-ridden exercise

BEHAVIOURS

You will look at safe working, work ethic, responsibility, team work and communication.

PATHWAYS

In addition to the core knowledge, skills and behaviours you will undertake further learning relevant to your job role and interests. There are five specialised routes you can choose from, each of which have specific knowledge and skills associated.

- **BREEDING** Additional knowledge and skills include stud contracts, reproductive anatomy, preparing a foaling environment, weaning processes and fostering processes.
- **DRIVING** Areas studied include the correct use of full, breast and empathy collars, open and quick release tugs and a variety of driving bits, preparing a turnout for exercise and competition as well as the cleaning of competition harness.
- **RACING** You will select to follow either the Senior Racing Exercise Groom or the Senior Racing Yard Based Groom pathways and learn areas such as specific exercise regimes, the breaking and training process, riding at speed and implementation of individual racehorse training programmes.
- **RIDING** Specific skills and knowledge will cover areas such as cleaning and preparation of saddlery and equipment for work and

competition, equitation theory, use of exercises such as transitions and riding horses of varying fitness levels.

- **NON-RIDING** Knowledge and skills will be gained in areas such as preparing equipment for work and competition, preparing horses for work and competition including selecting and fitting correct discipline specific saddlery and equipment, planning events, business diversification and customer care.

ASSESSMENT

FUNCTIONAL SKILLS

You will undertake Functional Skills Level 1 and Level 2 in English and Maths if you are under 19 years of age (unless exempt).

PORTFOLIO

During your apprenticeship you will compile a portfolio of evidence to demonstrate your knowledge, skills and behaviours.

Once you have completed your portfolio, Functional Skills and a minimum of 12 months of training, you will be able to undertake the End Point Assessment.

END POINT ASSESSMENT (EPA)

The EPA consists of:

Knowledge Test: An invigilated, online or paper-based multiple choice question test taken at the workplace or approved centre.

Practical Observation: A structured observation of the apprentice by an independent assessor.

Professional Discussion: A structured interview between the apprentice and the independent assessor taking place after the knowledge test and practical observation which will provide the opportunity for to use portfolio evidence to illustrate professional competence

Your performance in the EPA will determine the apprenticeship grade of fail, pass or distinction.

ENTRY REQUIREMENTS

There are no formal academic entry requirements. However, you will need to be living and working in England in a suitable equine environment, earning at least the National Minimum Wage for Apprentices, within a 90 minute radius of our Huntingdon centre. If your place of work is outside of this area, please contact us as we may still be able to meet your training needs.

To complete this apprenticeship within 18-24 months you will need to be working for a minimum of 30 hours per week, if you are working less than

30 hours a week the length of your apprenticeship will be extended depending on your working hours.

You must be employed in a supervisory or managerial position to undertake this course i.e. head groom or yard manager. If you are not working directly in a supervisory role but wish to undertake this qualification to enhance your prospects of progressing into such a position, please contact us and speak to a member of our work-based learning team to discuss your suitability for the programme.

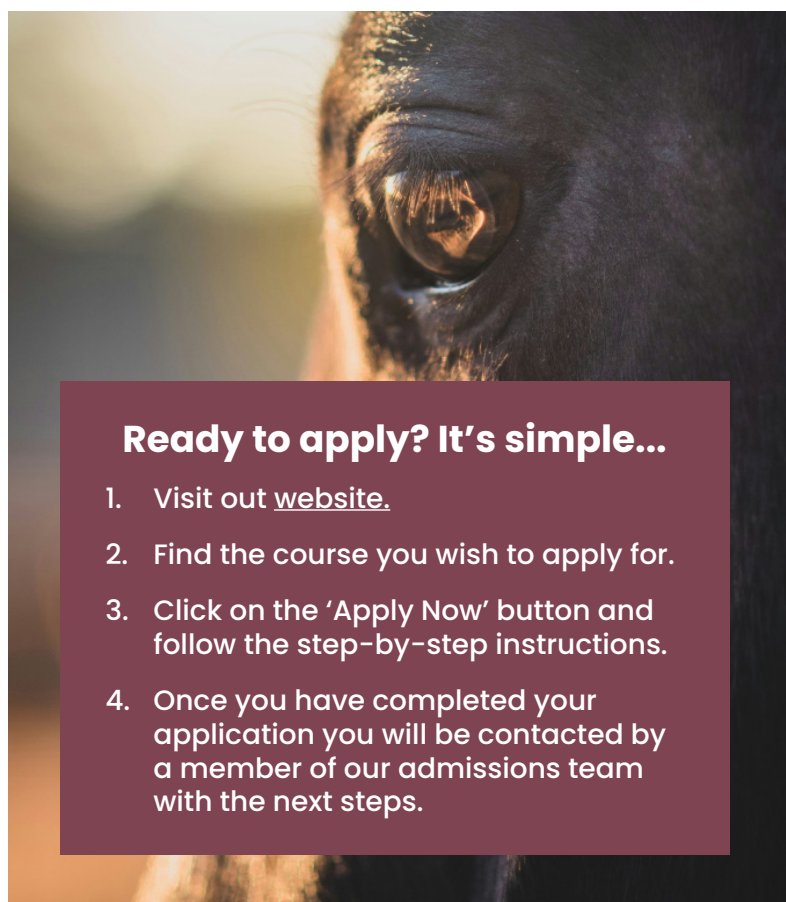
FEES

Apprenticeship fees are payable by the employer. Fees can be found on our [website](#).

WHAT NEXT?

On completion of your apprenticeship you will have gained the knowledge, leadership skills and abilities to effectively plan and coordinate the care of horses and allocate resources to achieve this.

You may wish to continue broadening your knowledge by undertaking regular Continuing Professional Development courses or looking at higher education, such as a foundation degree in horse management (subject to individual university entry requirements).



Ready to apply? It's simple...

1. Visit our [website](#).
2. Find the course you wish to apply for.
3. Click on the 'Apply Now' button and follow the step-by-step instructions.
4. Once you have completed your application you will be contacted by a member of our admissions team with the next steps.



The College of Animal Welfare, Chord Business Park, London Road,
Godmanchester, Cambridgeshire PE29 2BQ

T: 01480 422060 E: admin@caw.ac.uk W: www.caw.ac.uk

© The College of Animal Welfare May 2025.
All information is correct at the time of press and may be subject to change.